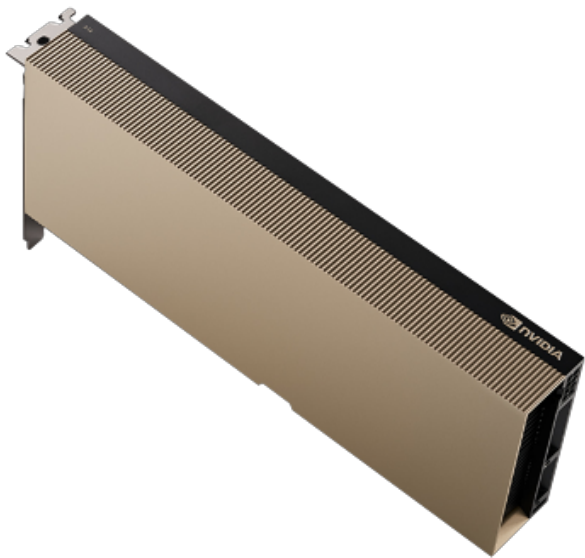


# PNY NVIDIA A16 Module 64GB GDDR6 ECC. PCI-E 4.0 x16

Kod producenta: TCSA16M-PB



Architecture	Ampere
CUDA Cores	1280 x 4
Tensor Cores	140 x 4
RT Cores	10 x 4
GPU Memory	16GB x 4
GPU Memory Type	GDDR6 ECC
Memory Bandwidth	232 GB/s x 4
System Interface	PCI-E 4.0 x16
NVENC   NVDEC	4x   8x (Includes AV1 Decode)
Max Power Consumption	250 W
Thermal Management	Passive

## NVIDIA A16

### Unprecedented User Experience and Density for Graphics-Rich VDI

Take remote work to the next level with NVIDIA A16, the ideal GPU for high-density, graphics rich VDI. Based on the latest NVIDIA Ampere architecture, A16 is purpose-built to achieve the highest user density, with up to 64 concurrent users per board in a dual slot form factor. Combined with NVIDIA Virtual PC (vPC) software, it enables the power and performance to tackle any project from anywhere. Based on the NVIDIA Ampere architecture, A16 provides double the user density versus the previous generation, while ensuring the best possible user experience.

Designed to meet the demands of the next generation of remote work, NVIDIA A16 has 4x the encoder throughput versus NVIDIA T4 to provide the best user experience, and flexibly supports heterogeneous user profiles on a single board.

Strona firmowa produktu:  
<https://www.superstorage.pl/pty-nvidia-a16-module-64gb-gddr6-ecc-pci-40-x16-p-5831.html>